



MICHIGAN DEPARTMENT OF
ENVIRONMENT, GREAT LAKES, AND ENERGY

Michigan Coastal Management Program

RONDA WUYCHECK, PROGRAM MANAGER

WUYCHECKR@MICHIGAN.GOV

517-420-5921

An aerial photograph of a coastal wetland area. The image shows a complex network of water bodies, including a large central lake and several smaller ponds and channels. The land is a mix of brown and tan colors, indicating different types of vegetation or soil. The water is dark, with some areas showing a greenish tint, possibly due to algae or other aquatic plants. The overall scene is a natural, undisturbed landscape.

Michigan Coastal Management Program

Celebrating 40+ years on
the fresh coast

MCMP Mission:

To protect, preserve,
restore, enhance, and
wisely develop the
coastal natural resources
and cultural heritage on
the nation's longest
freshwater coastline.



Strategic Goals



Plan for growth and change in coastal communities

Adapt

Accommodate

Retreat



Protect, Preserve, Restore and Enhance coastal ecosystems

Support use and enjoyment of current and future generations.

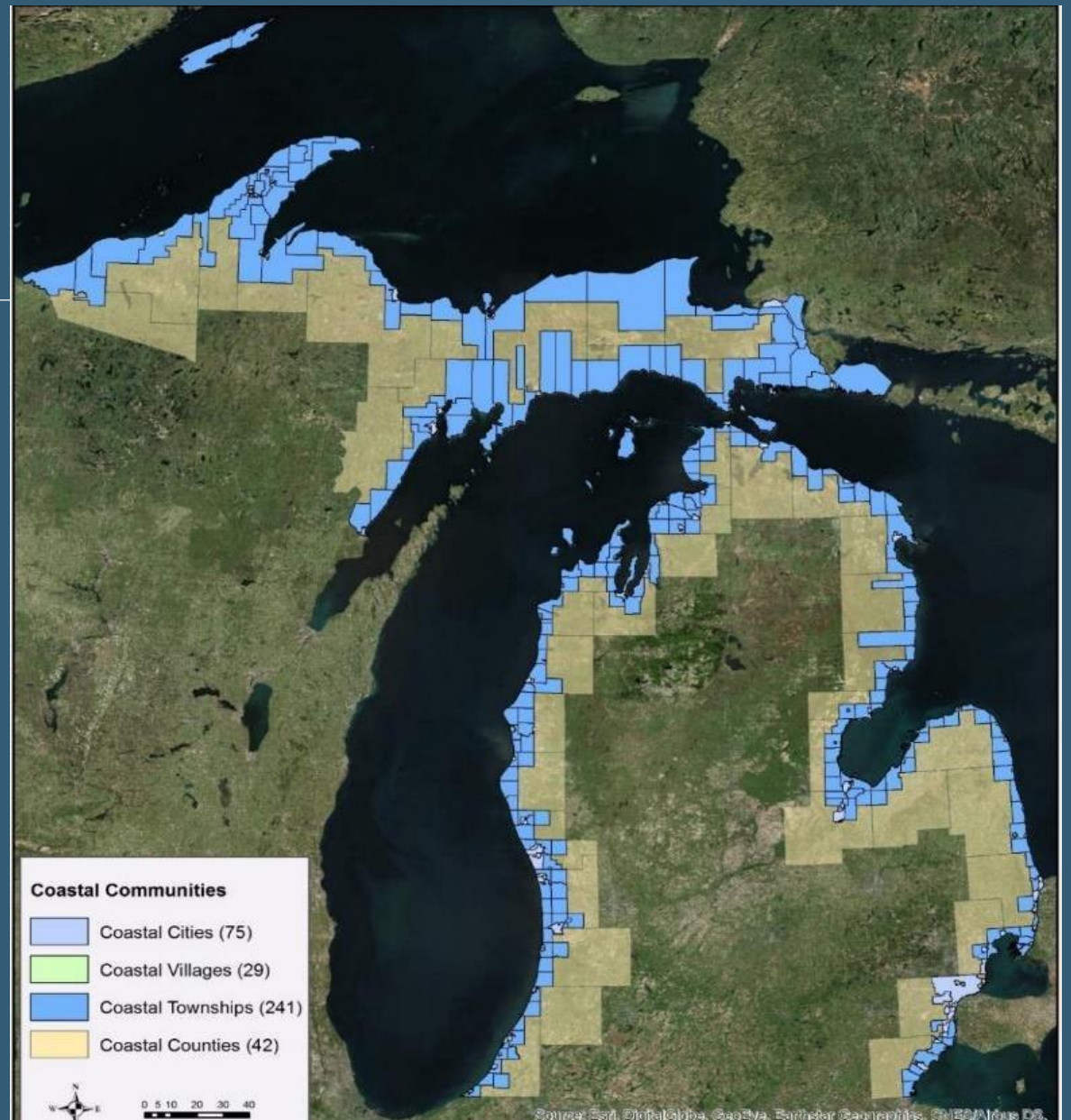


Build partnerships

Strengthen and expand collective impact.

Building Resiliency in Coastal Communities

Community resiliency is defined as the sustained ability of a community to understand and use available resources to respond to, withstand, and recover from adverse situations.



Hardened Shoreland Protection



Hardened Shoreland Protection



Protect Public Access to Public Trust Lands





A Hazard-ready Community can absorb, adapt, and rebound from changes in Great Lakes water levels, coastal storms and floods.



Manage coastal hazards at the community level by developing scenario-based decisions that protect lives and property, and improving hazard understanding and awareness.

MCMP Coastal Resilience Team



Partnering to Create Hazard-ready Coastal Communities

Incorporate resilience principles into community master plans and ordinances.

Create information and resources supporting local action.

RESTORING, RETROFITTING,
AND RECOUPLING GREAT
LAKES SHORELANDS

LOCAL PLANNING FOR
RESILIENT GREAT LAKES
COASTAL COMMUNITIES

METHODS MANUAL

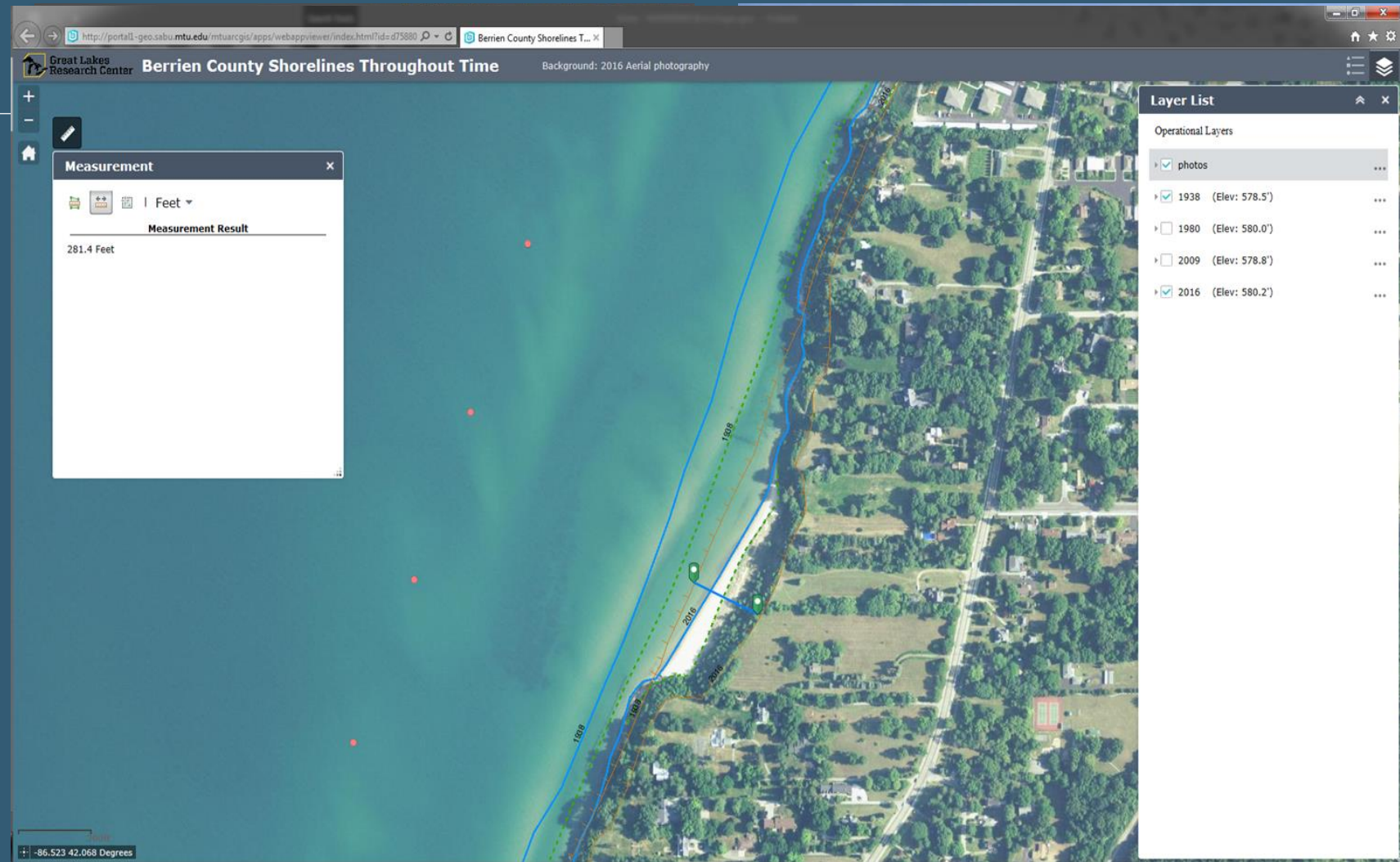
August 2016

**SURVIVE
AND
THRIVE**

Lessons from
Michigan Coastal Communities
Planning for Resiliency

Partnering to Create Hazard-ready Coastal Communities

Developing innovative approaches at viewing the coastline through a “80-year Shoreviewer”.



Managed Retreat – Beach Setback Ordinance



Grand Haven, Michigan

Protect Private Property
Preserve Public Trust Lands

EGL



MICHIGAN DEPARTMENT OF
ENVIRONMENT, GREAT LAKES, AND ENERGY

Ronda Wuycheck, Program Manager

wuycheckr@Michigan.gov | 517-420-5921

800-662-9278 | www.Michigan.gov/EGLE