

# Statewide Poll of Michigan Residents 18-29

**Detroit Regional Chamber and Business Leaders for Michigan  
with the Glengariff Group Inc.**

# Chamber-Business Leaders for Michigan

## New Poll: Michigan Residents Ages 18-29

### Key Takeaways:



**The Under-30 crowd is looking for the same things:**

- ✓ Working infrastructure
- ✓ Good schools and education
- ✓ Safe communities



**Jobs and economic issues are critical:**

- ✓ Good jobs and careers in growing industries with good workplace practices
- ✓ Growing dynamic economy



**Social policies matter and they “lean” left:**

- ✓ Abortion rights
- ✓ LGBTQ rights
- ✓ Gun control policy

# New Poll: Michigan Residents Ages 18-29

**WHERE DO YOU SEE  
YOURSELF LIVING  
IN 10 YEARS?**

**64%** MICHIGAN

**26%** SOMEWHERE  
ELSE

YOUNG MICHIGAN RESIDENTS  
WITH A BACHELOR'S  
DEGREE OR HIGHER ARE

**MORE LIKELY  
TO LEAVE  
THE STATE**

**IN THE NEXT 10 YEARS**

# New Poll: Michigan Residents Ages 18-29

WHAT MAKES PEOPLE WANT TO STAY  
**IN MICHIGAN?**



**FAMILY**



**MARITAL STATUS**



**BEING BORN  
IN MICHIGAN**

NEARLY

**75%**

OF YOUNG MICHIGAN  
RESIDENTS ARE OPTIMISTIC  
ABOUT THE STATE'S ECONOMIC  
FUTURE BUT **19% ARE PESSIMISTIC**

# New Poll: Michigan Residents Ages 18-29

## COMPARING OPPORTUNITY LEVEL IN MICHIGAN TO OTHER STATES



AMONG THE **15%**  
WHO THINK THERE IS  
LESS OPPORTUNITY,  
THE REASONS WHY ARE:

**12%**  
THERE ARE NOT  
ENOUGH JOBS

**12%**  
THERE ARE LESS  
OPPORTUNITIES  
IN MY FIELD

**11%**  
MICHIGAN IS NOT DIVERSE  
IN ITS INDUSTRIES



# New Poll: Michigan Residents Ages 18-29

## REASONS PEOPLE WOULD CHOSE A JOB IN ANOTHER STATE OVER MICHIGAN



### **CALIFORNIA**

- MOSTLY DEMOCRATS
- BETTER WEATHER



### **CHICAGO**

- DEMOCRATS AND REPUBLICANS, MORE EDUCATED
- “BIG CITY” LIFESTYLE



### **TEXAS** *DEMOCRATS AND REPUBLICANS, BUT FOR DIFFERENT REASONS*

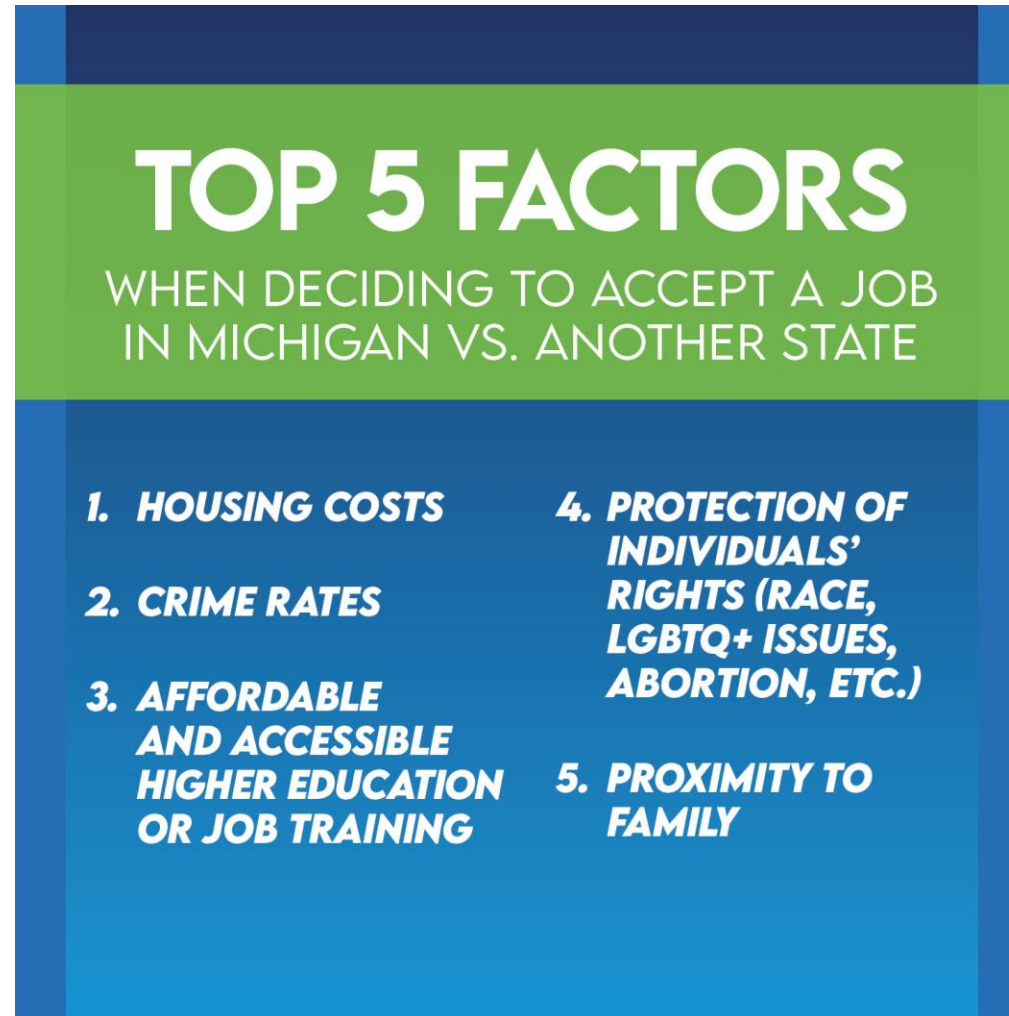
- REPUBLICANS: POLITICALLY CONSERVATIVE, NO INCOME TAX, “BETTER” GOVERNMENT, LOWER COST
- DEMOCRATS: BETTER WEATHER

# New Poll: Michigan Residents Ages 18-29

## MICHIGAN'S COMPETITION BY EDUCATION LEVEL

	MICHIGAN VS. CHICAGO	MICHIGAN VS. TEXAS
	EDUCATION LEVEL	
HIGH SCHOOL	(M) 92% (C) 8%	(M) 77% (T) 22%
ASSOCIATE DEGREE	(M) 93% (C) 6%	(M) 73% (T) 19%
TECHNICAL CERTIFICATE	(M) 94% (C) 6%	(M) 79% (T) 19%
BACHELOR'S OR HIGHER	(M) 80% (C) 18%	(M) 87% (T) 11%

# New Poll: Michigan Residents Ages 18-29





# New Poll: Michigan Residents Ages 18-29

**SOCIAL ISSUES GROW IN IMPORTANCE**  
WHEN CONSIDERING A JOB OPPORTUNITY:

**60%**

THINK  
**GUN-RELATED  
POLICIES**  
ARE IMPORTANT

**48%**

THINK  
**LGBTQ RIGHTS**  
ARE IMPORTANT

**74%**

THINK  
**RACIAL EQUALITY  
POLICIES**  
ARE IMPORTANT

**47%**

THINK  
**PRO-CHOICE  
ABORTION POLICIES**  
ARE IMPORTANT