



# **State of the State Survey Winter 2016**

**Charles L. Ballard**

**Professor, Department of Economics**

**Director, State of the State Survey**

**Institute for Public Policy and Social Research**

**[ballard@msu.edu](mailto:ballard@msu.edu)**

**517.353.2961**



# **State of the State Survey Winter 2016**

**Michigan Residents Blame Snyder  
And State Government for Flint Water  
Crisis; Snyder Ratings Plummet**

**Obama Ratings Improve**

**Trust in Government Holds Steady**



# About SOSS Wave 72

**995 Interviews Completed**

**Dec. 5, 2016 – March 26, 2016**

**Margin of Error:  $\pm 3.11\%$**



**Four out of seven Michigan residents placed the main responsibility for the Flint water crisis on Governor Snyder, his appointee Darnell Earley, or state government.**



# Michigan Residents' Opinions About Who Is Most Responsible for the Flint Water Crisis, Winter 2016

<b>Michigan Dept. of Environmental Quality</b>	<b>26.3%</b>
<b>Governor Rick Snyder</b>	<b>19.9%</b>
<b>Emergency Financial Mgr. Darnell Earley</b>	<b>10.4%</b>
<b>State of Michigan (unspecified)</b>	<b>0.4%</b>

<b>Flint City Council</b>	<b>8.3%</b>
<b>Flint Mayor Dayne Walling</b>	<b>3.2%</b>
<b>Flint Water Department</b>	<b>1.5%</b>
<b>Citizens of Flint</b>	<b>0.2%</b>
<b>U.S. Environmental Protection Agency</b>	<b>1.2%</b>



**And 17.2 percent of respondents  
said that responsibility for the  
Flint water crisis belongs to  
“everyone.”**



**Governor Snyder's approval ratings fell sharply.**



Michigan Residents' Ratings of Governor Snyder's Performance, Winter 2016







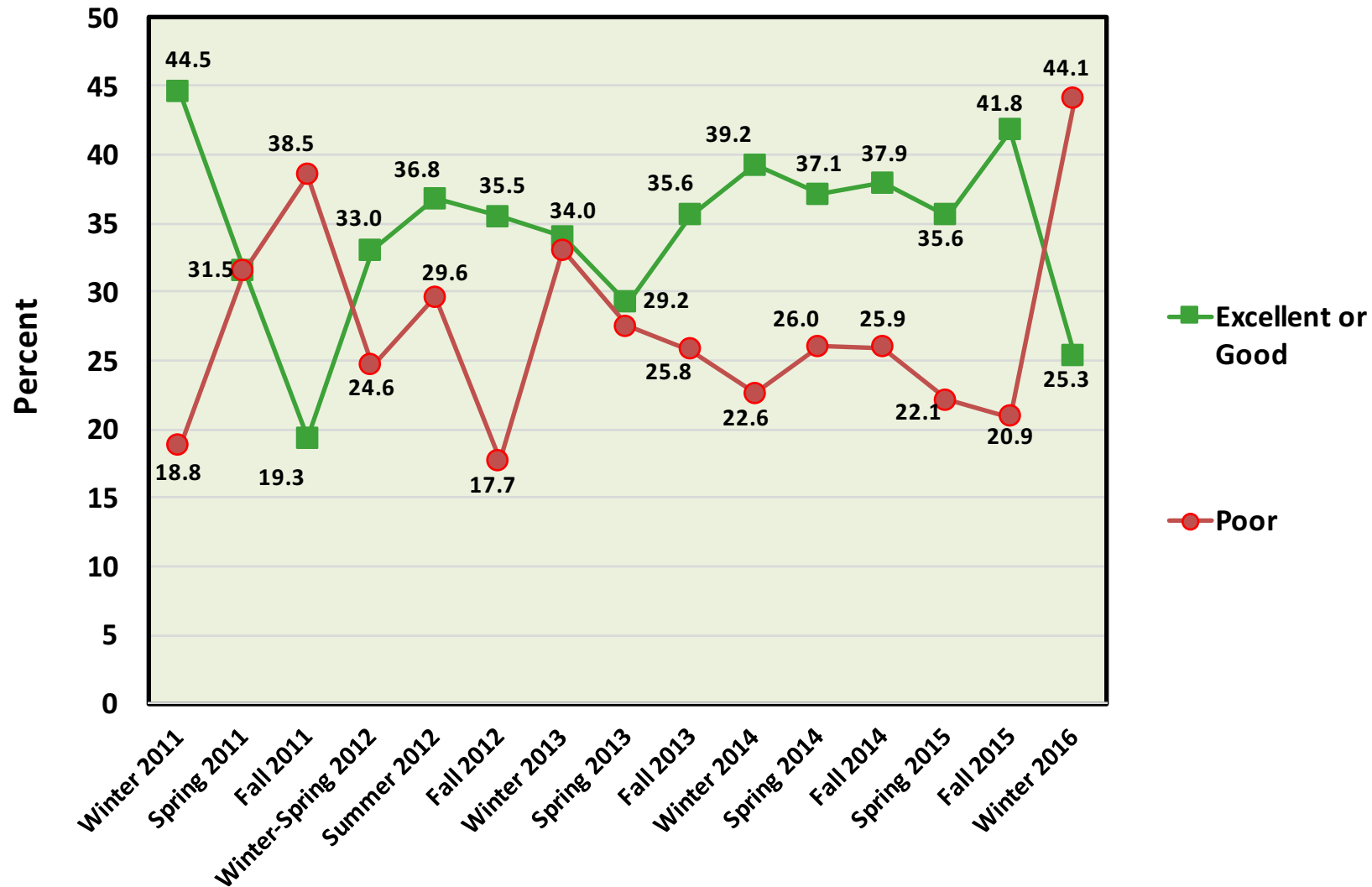
**Snyder received a “poor” rating from 44.1% of respondents.**

**That’s the largest fraction ever to give him a poor rating.**

**It’s up sharply from 20.9% “poor” in the previous survey in Fall 2015.**



### Michigan Residents' Ratings of Governor Snyder's Performance, 2011-2016





**Snyder's approval ratings fell  
across the political spectrum.**



## Snyder "Excellent" or "Good"

	Fall 2015	Spring 2016
<b>Republicans</b>	<b>64.2%</b>	<b>49.9%</b>
<b>Independents</b>	<b>44.8%</b>	<b>24.3%</b>
<b>Democrats</b>	<b>20.5%</b>	<b>6.9%</b>

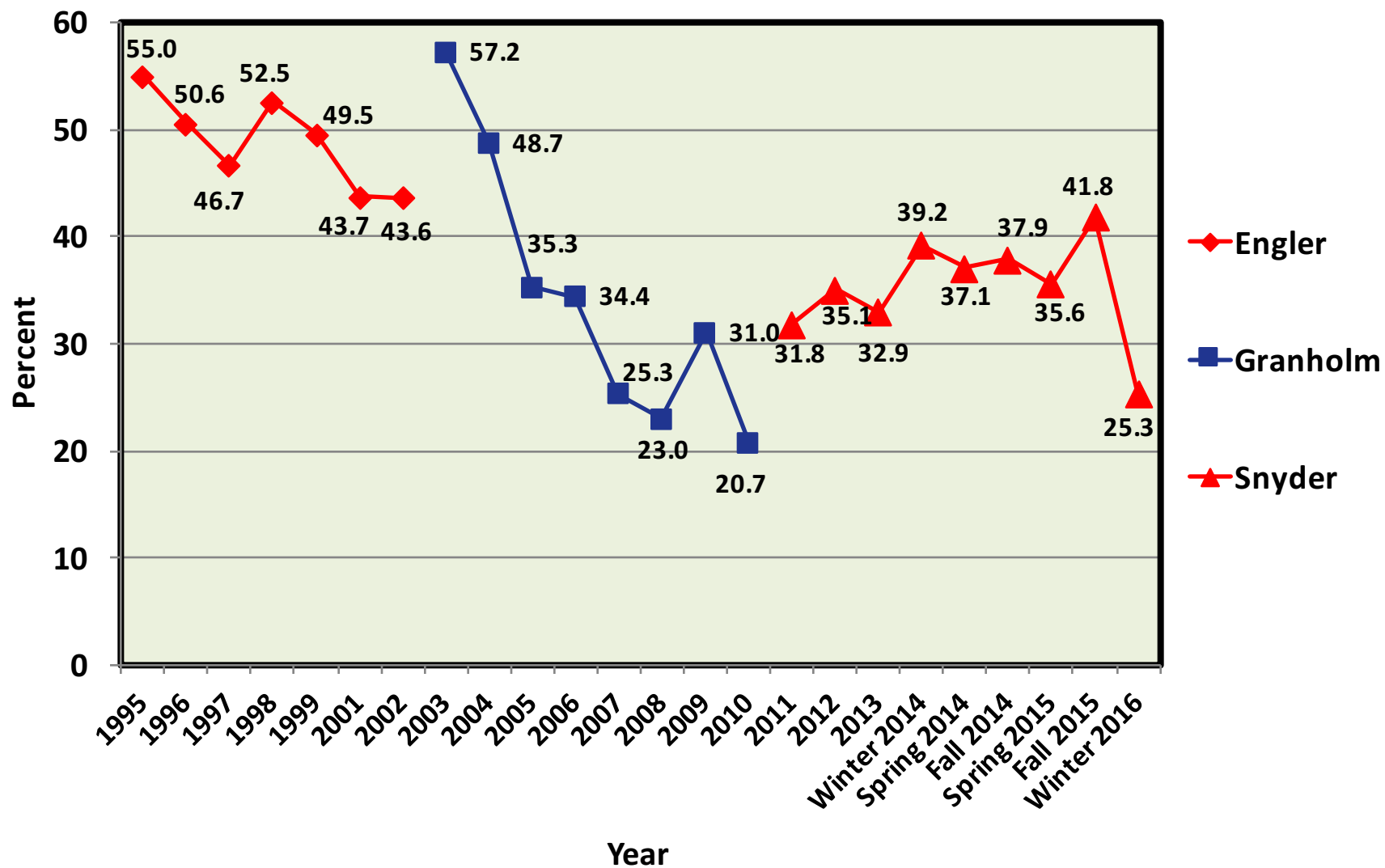


## Snyder "Poor"

	Fall 2015	Spring 2016
<b>Republicans</b>	<b>11.3%</b>	<b>15.6%</b>
<b>Independents</b>	<b>15.1%</b>	<b>41.6%</b>
<b>Democrats</b>	<b>35.5%</b>	<b>70.6%</b>



## Percentage of Michigan Residents Rating Performance of Governors as "Excellent" or "Good," 1995-2016

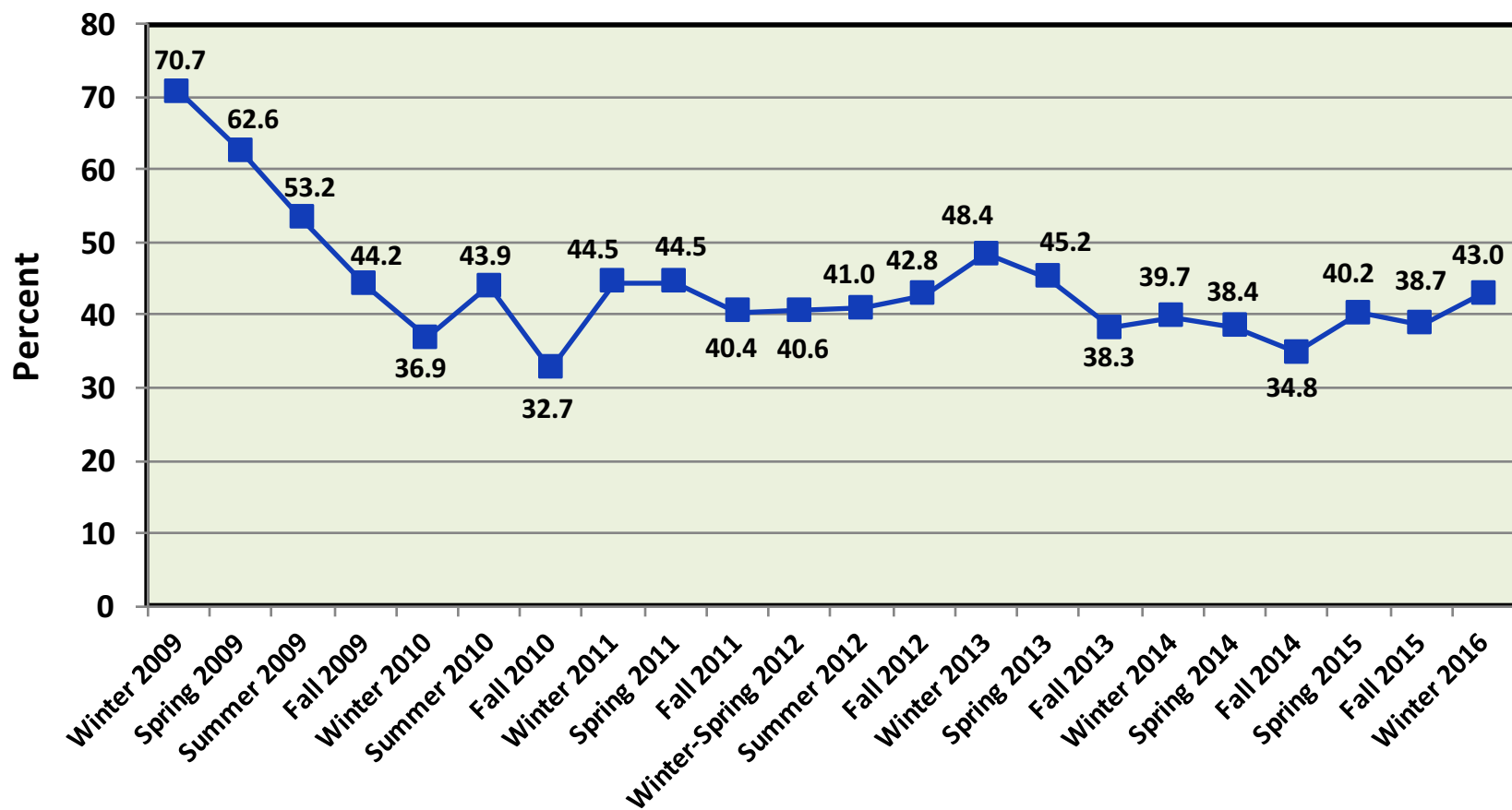




**By contrast,  
President Obama's  
ratings improved.**



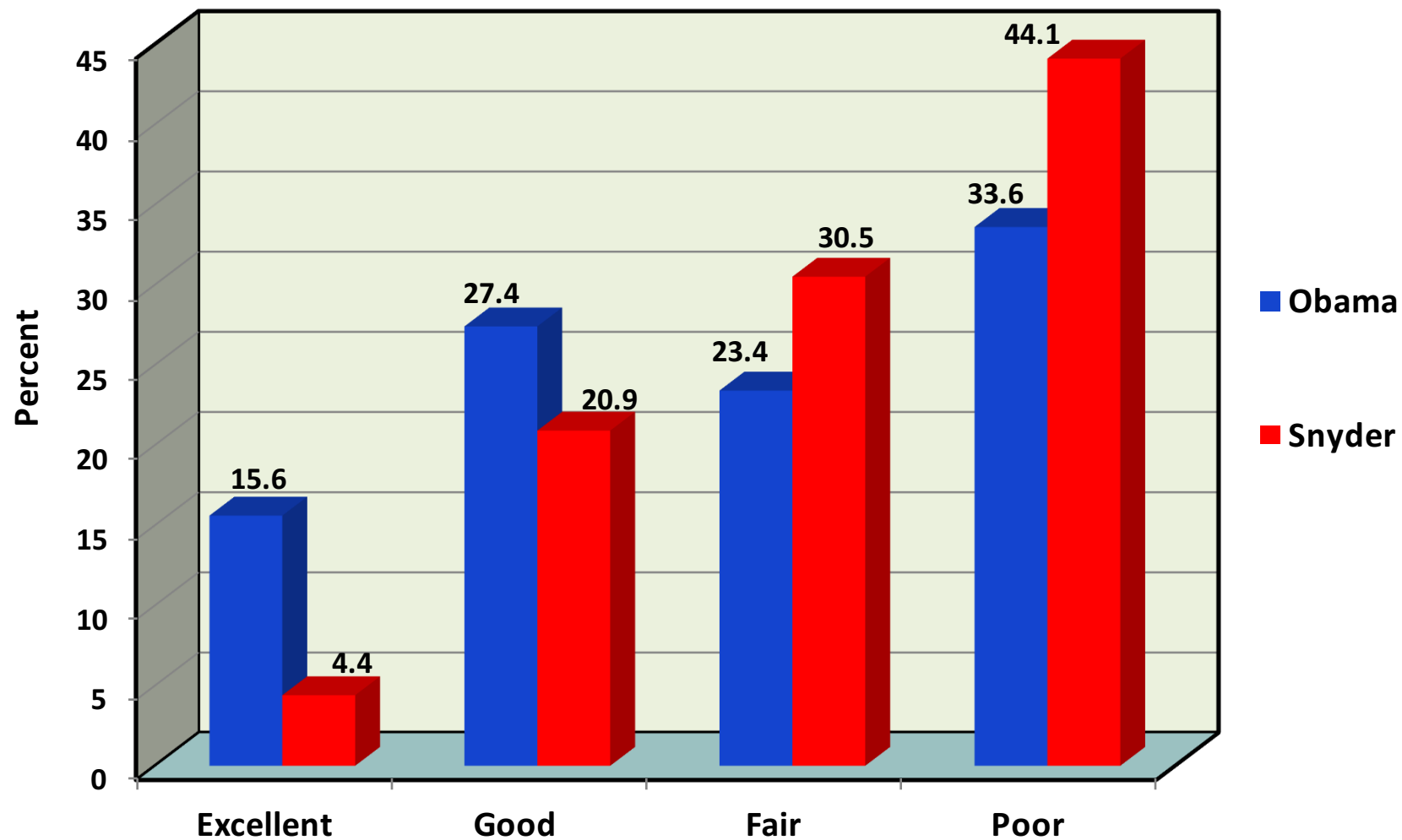
## Percentage of Michigan Residents Rating President Obama's Performance as "Excellent" or "Good," 2009-2016







### Michigan Residents' Ratings of the Performances of President Obama and Governor Snyder, Winter 2016





# **Attitudes by Assessment of Responsibility For Flint Water Crisis**



# Ratings of the Governor and President, for those with different views on main responsibility for Flint water crisis

	Governor Snyder	Emergency Financial Manager Earley	Michigan Dept. of Env. Quality	Mayor Walling	Flint City Council
Obama “Excellent” or Good”	72.2%	52.8%	33.4%	10.5%	23.1%
Snyder “Excellent” or Good”	2.7%	17.2%	33.9%	46.6%	40.3%



# **Attitudes by Race and Gender**



# Views of Michigan Residents by Race and Sex

	State of Michigan		Women	Men		Whites	Blacks
Obama “Excellent” or Good”	43.0%		47.9%	38.0%		35.4%	77.2%
Snyder “Excellent” or Good”	25.3%		22.5%	28.2%		27.4%	12.7%



# Attitudes by Political Party



# Views of Michigan Residents by Political Party

	State of Michigan	Republican	Independent	Democrat
Obama “Excellent” or Good”	43.0%	6.8%	35.1%	82.8%
Snyder “Excellent” or Good”	25.3%	49.9%	24.3%	6.9%



# Regional Attitudes





# Views of Residents from Different Regions in Michigan

	State of Michigan	City of Detroit	Wayne, Oakland, Macomb	City of Flint <sup>a</sup>	Grand Rapids Area <sup>b</sup>
Obama “Excellent” or Good”	43.0%	68.7%	47.2%	64.7%	41.1%
Snyder “Excellent” or Good”	25.3%	11.7%	22.4%	0.0%	42.2%

<sup>a</sup> The results for Flint are based on only 12 observations, and should be interpreted with caution.

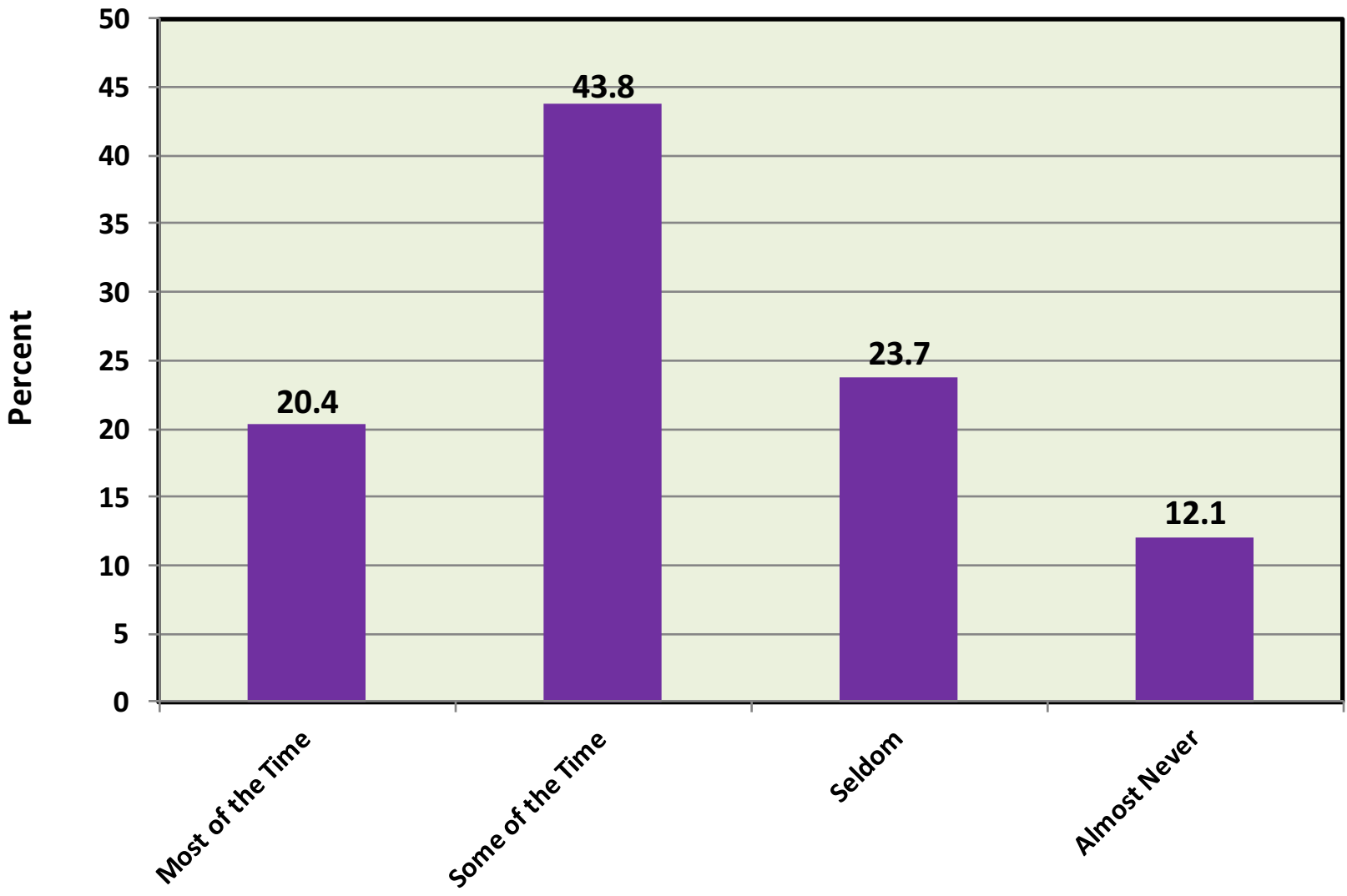
<sup>b</sup> Allegan, Barry, Ionia, Kent, Montcalm, Muskegon, Newaygo, and Ottawa Counties

**Although Governor Snyder's ratings suffered a substantial fall, this did NOT correspond to a major loss in trust in the state government.**

**The fraction who said they could trust state government "seldom" or "almost never" increased, but so did the fraction who said they could trust state government "nearly all or most of the time."**

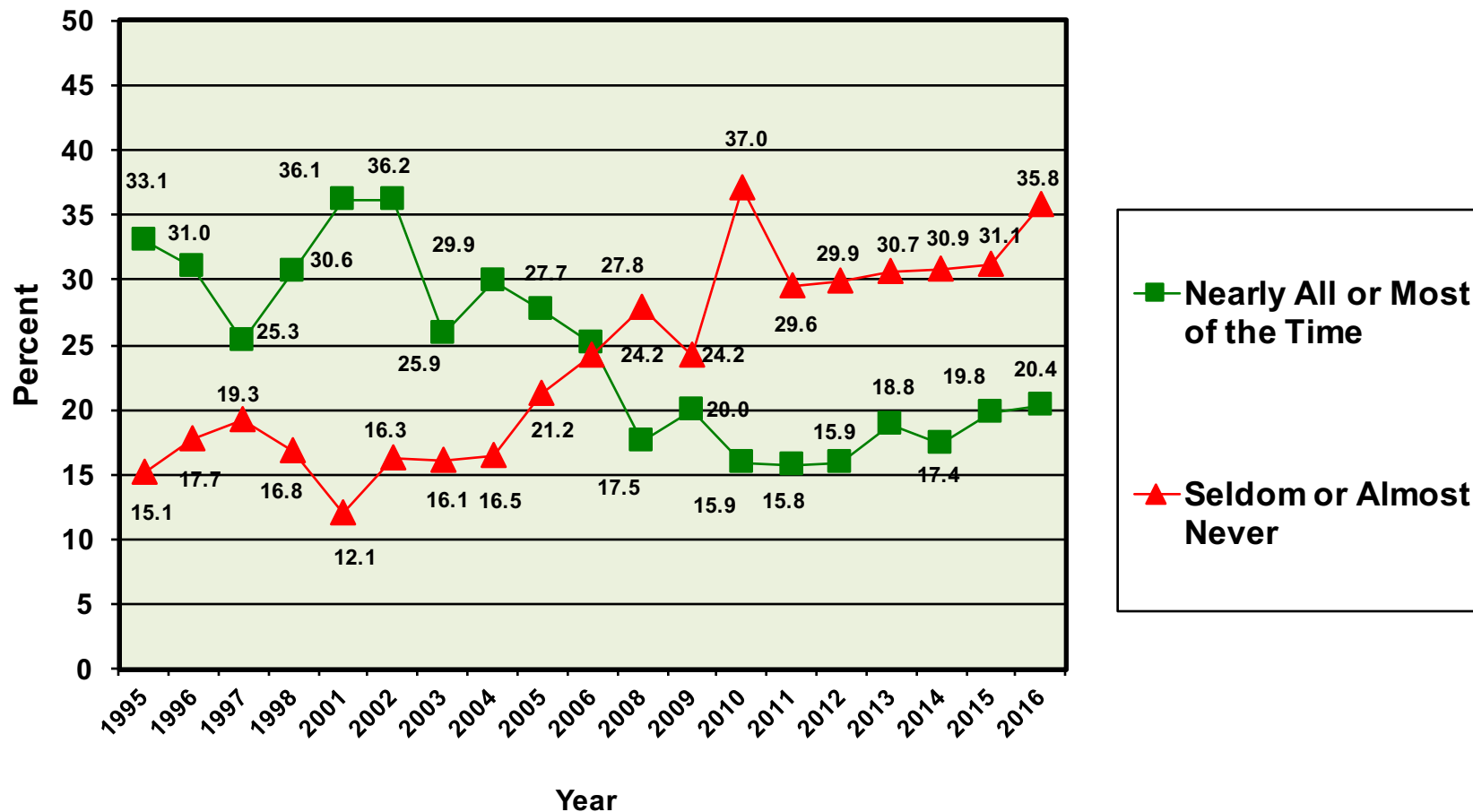


Michigan Residents' Opinions of How Often They Can Trust the State Government, Winter 2016





### Michigan Residents' Opinions of How Often They Can Trust the State Government, 1995-2016

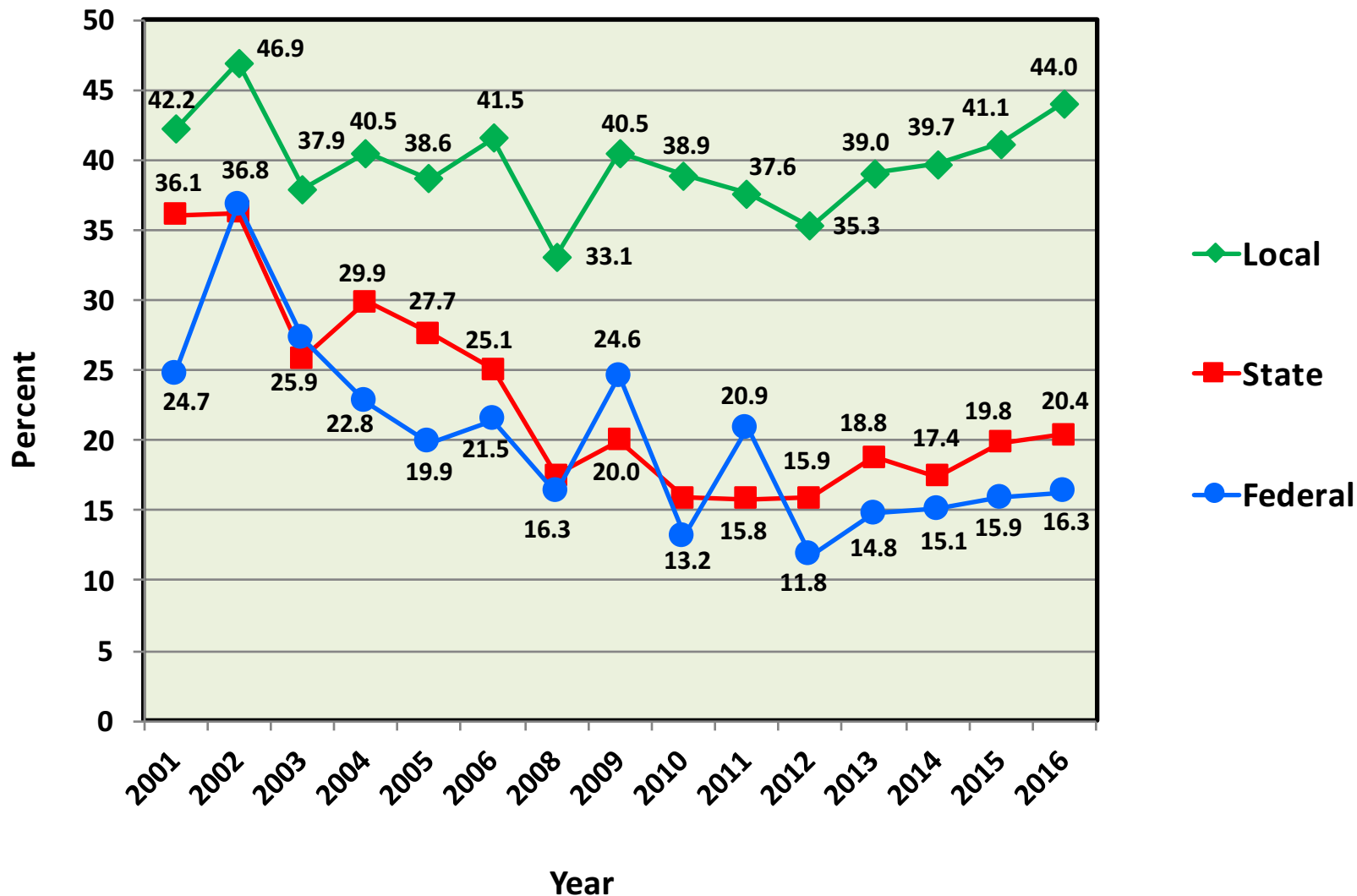




**In fact, after a long period of decline, trust in all levels of government has shown a modest increase since 2012.**



## Percent of Michigan Residents Saying They Trust Local, State, or Federal Government "Nearly All or Most of the Time," 2001-2016





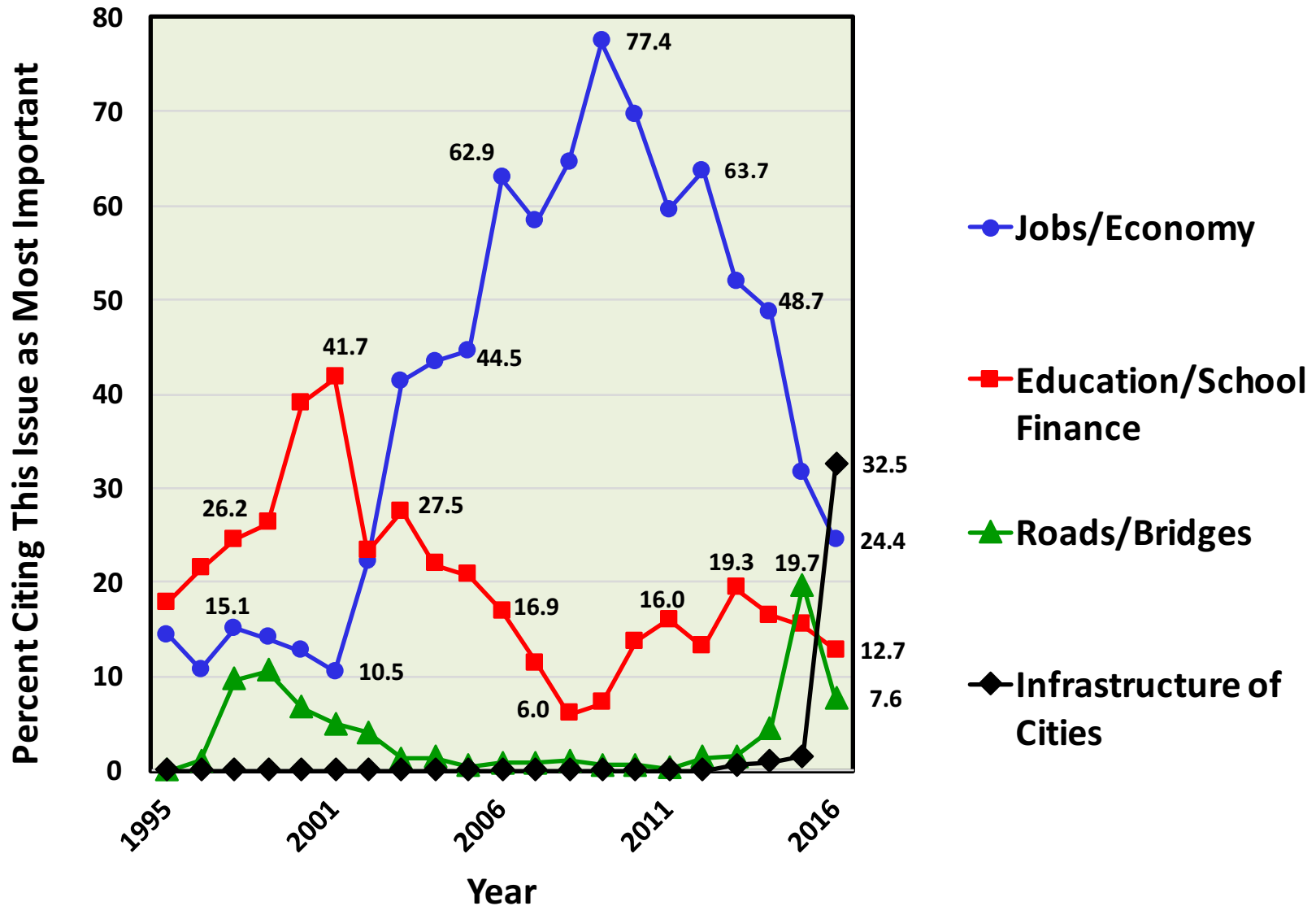
**The Flint water crisis has brought infrastructure of cities to the top of the list of the most important problems facing the Governor and Legislature, for the first time.**

## Most Important Problem Facing the Governor and Legislature, SOSS 72, Winter 2016

Infrastructure of Cities	32.5%
Jobs / Economy	24.4%
Education Quality / Finances	12.7%
Road Repair / Bridge Repair	7.6%
Crime / Drugs / Violence	3.3%
Taxes / Reduce Taxes	2.6%
Health Care / Health Insurance	2.6%
Poverty / Homelessness / Social Programs	1.6%
Solve Budget Issues	1.3%
Environment	1.2%
Ethics, Political Reform, Election Reform	0.9%
Moral Issues / Abortion / Family Values	0.9%
Welfare Reform	0.5%
Diversity / Race Relations	0.3%
Foreign Policy	0.3%
Prescription Drug Coverage for Seniors	0.2%
Reduce Size of Government	0.2%
Regulation / Deregulation	0.2%
Gun Control	0.1%



## Michigan Residents' Perceptions of the Most Important Problem Facing the Governor and Legislature, 1995-2016





**Although Governor Snyder's approval ratings fell substantially, Michiganders are favorable toward the Detroit bankruptcy that took place during his watch.**



# How has Detroit fared as a result of the bankruptcy?

<b>Much better off</b>	<b>14.3%</b>
<b>Somewhat better off</b>	<b>63.6%</b>
<b>Neither better nor worse</b>	<b>4.2%</b>
<b>Somewhat worse off</b>	<b>13.1%</b>
<b>Much worse off</b>	<b>4.7%</b>

# How to Learn More about SOSS:

<http://ippsr.msu.edu/SOSS/>

**Charles Ballard:**      **ballard@msu.edu**  
**517.353.2961**

**Matt Grossmann:**      **grossm63@msu.edu**  
**517.884.8640**

**Cynthia Kyle:**      **kylec@msu.edu**  
**517.353.1731**

**Graham Pierce:**      **glpierce@msu.edu**  
**517.884.0364**



# THANK YOU!

**MICHIGAN STATE**  
UNIVERSITY

Institute for Public Policy  
and Social Research  
State of the State Survey