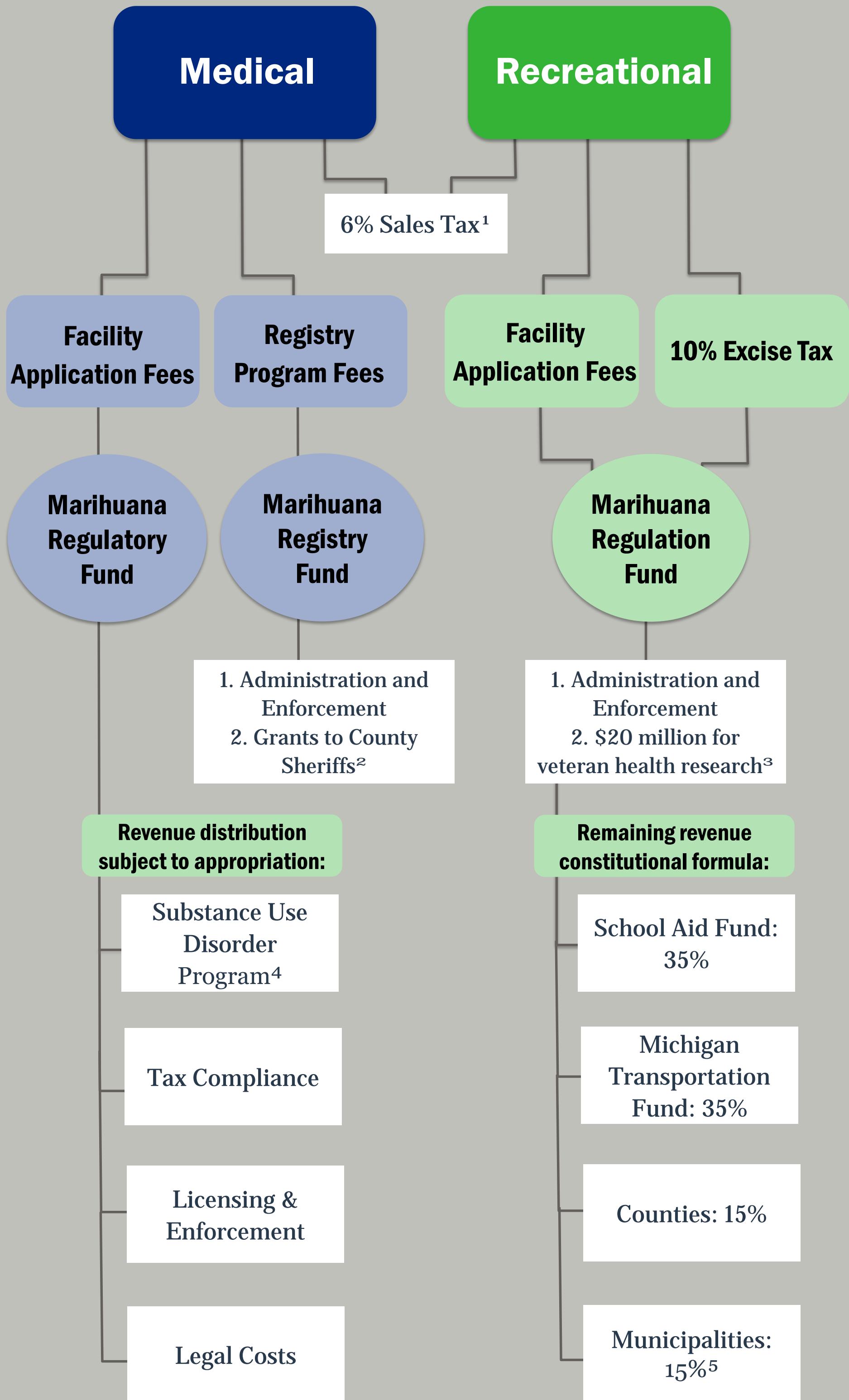


# Marihuana Revenue

## Michigan Medical and Recreational Marihuana Revenue Distribution



<sup>1</sup> Both medical and recreational marihuana sales are subject to a 6% sales tax. Revenue is distributed to the School Aid Fund, constitutional revenue sharing, and the General Fund.

<sup>2</sup> Grants to county sheriffs are distributed proportionately based on the number of medical marihuana registry ID cards issued to, or renewed by, county residents. Expenditures are restricted to education and outreach efforts surrounding marihuana use.



<sup>3</sup> \$20 million for research on the efficacy of marihuana in treating veterans and preventing veteran suicide applies until 2022.

<sup>4</sup> The Substance Use Disorder program is funded and administered through the Department of Health and Human Services.

<sup>5</sup> Municipalities may charge additional fees up to \$5,000 for a marihuana facility license application.