



# MICHIGAN HEALTH POLICY ISSUES GROUP

May 8, 2020

## **Debra Furr-Holden, PhD**

Associate Dean for Public Health Integration

Director & C.S. Mott Endowed Professor of  
Public Health

Michigan State University College of Human  
Medicine, Division of Public Health

### Total numbers

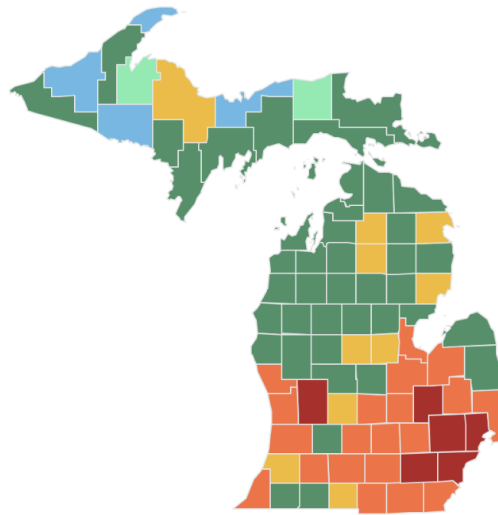
Total cases: 45,646

Deaths: 4,343

### Per capita

Cases: 457 per 100,000

Deaths: 44 per 100,000

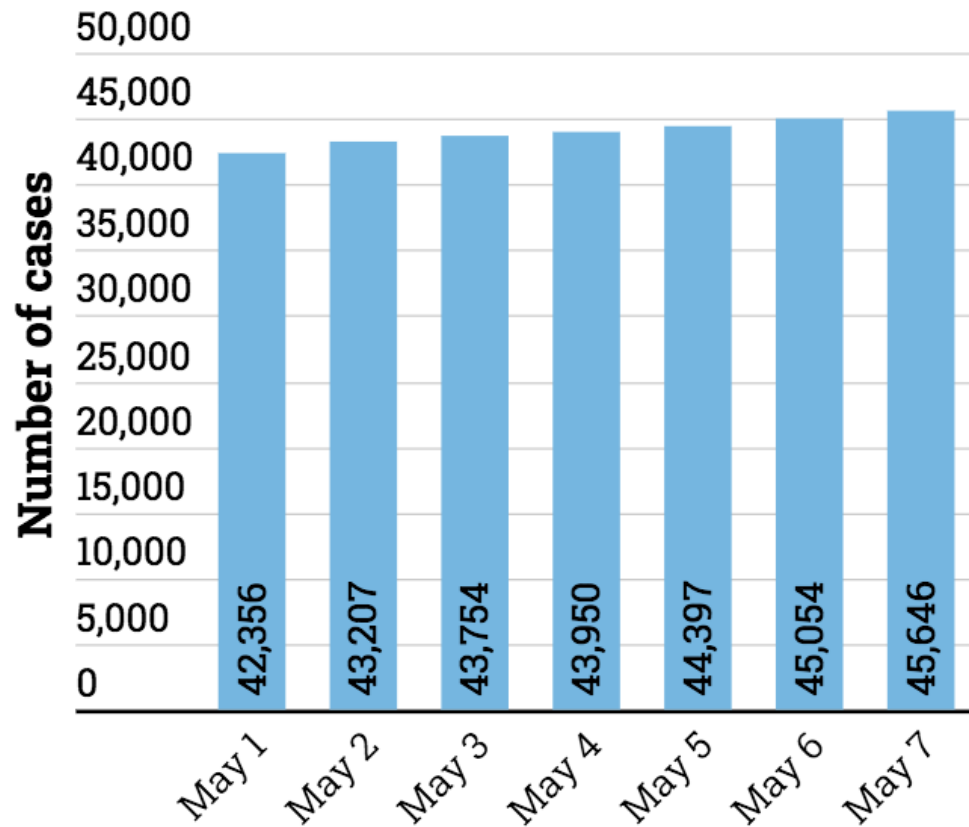


### Total cases (cases per 100,000 people)

- |                                      |   |
|--------------------------------------|---|
| No cases                             | 50 to 99 (100 to 199 cases per 100,000)   |
| 1 (fewer than 50 cases per 100,000)  | 100 to 999 (200 to 300 cases per 100,000) |
| 2 to 49 (50 to 99 cases per 100,000) | Over 1,000 (Over 300 cases per 100,000)   |

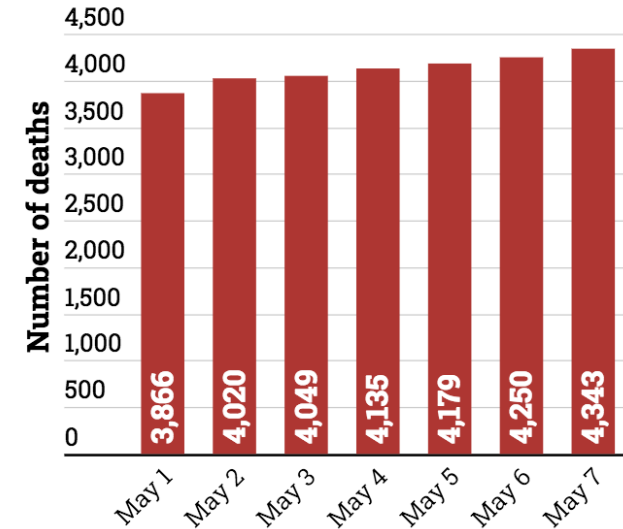
# Total cases

Total cases going back one week



# Total deaths

Total deaths reported going back 7 days



## By gender



● Male ● Female

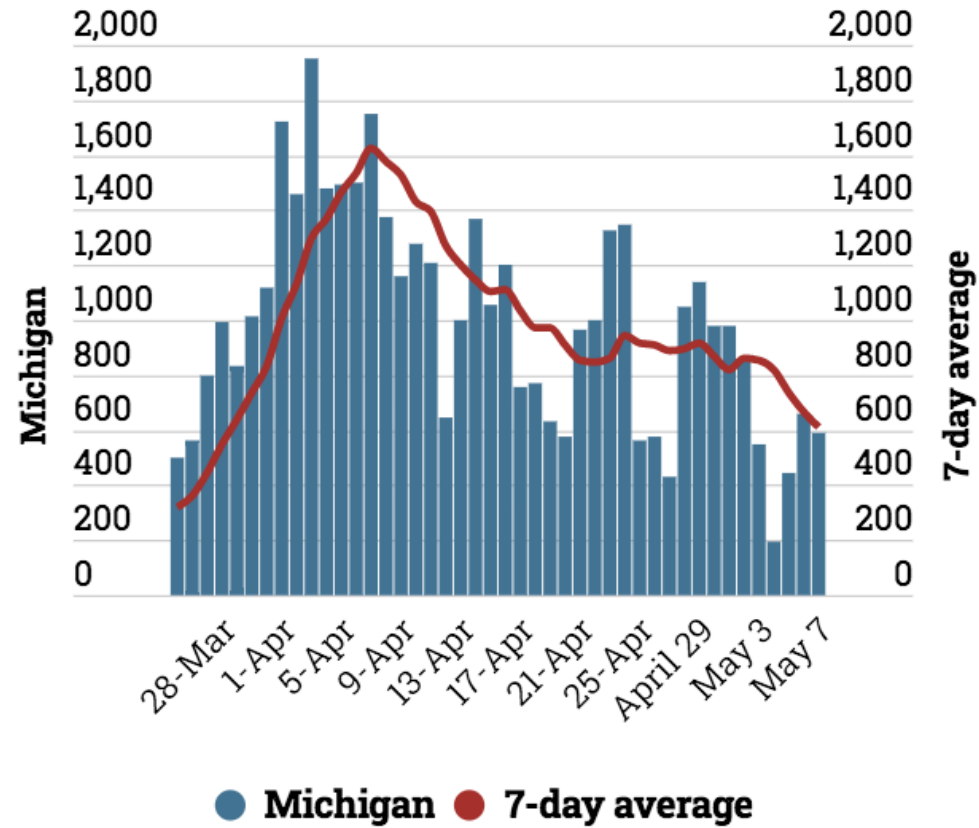
## By age

**Median age:** 76 years old

**Age range:** 5 to 107 years old

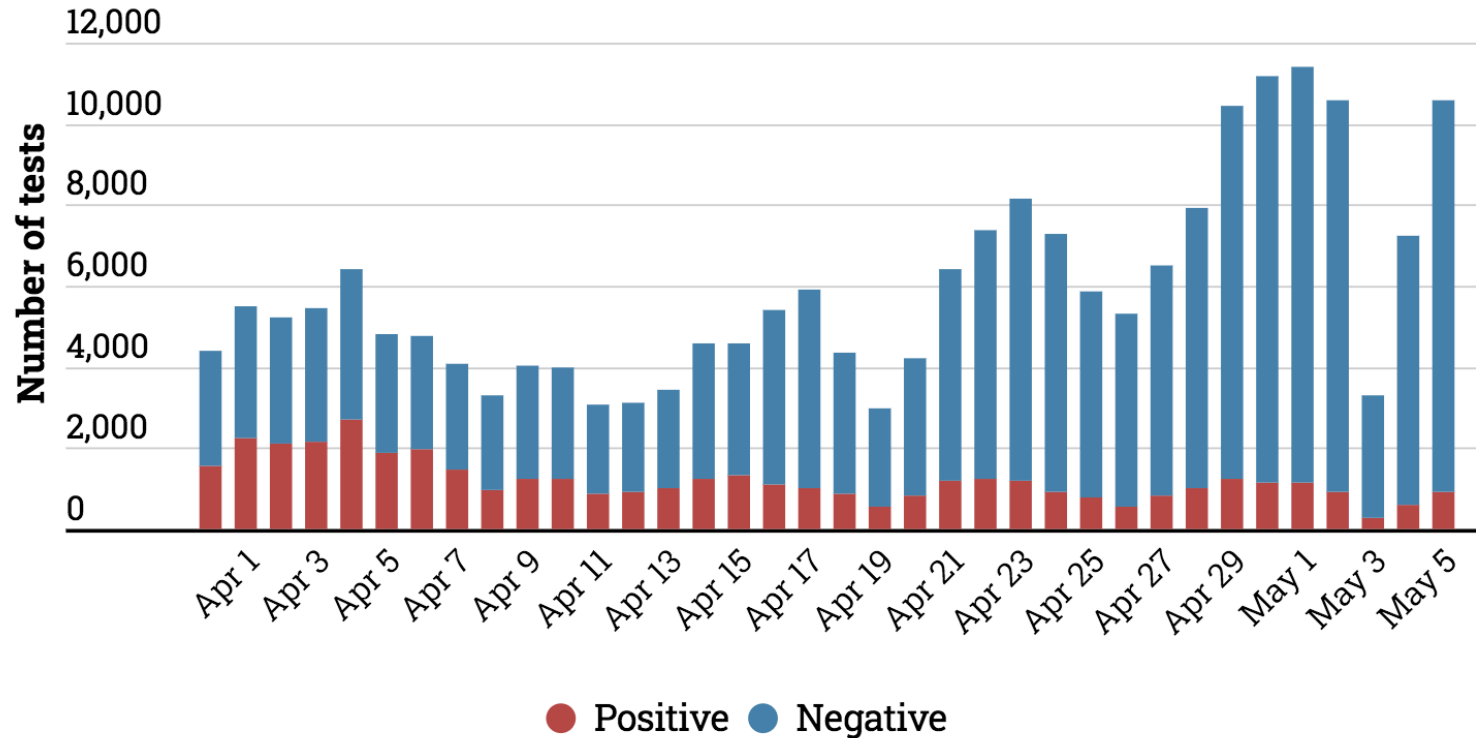
# Daily cases

New cases each day since March 25



# Michigan testing by day

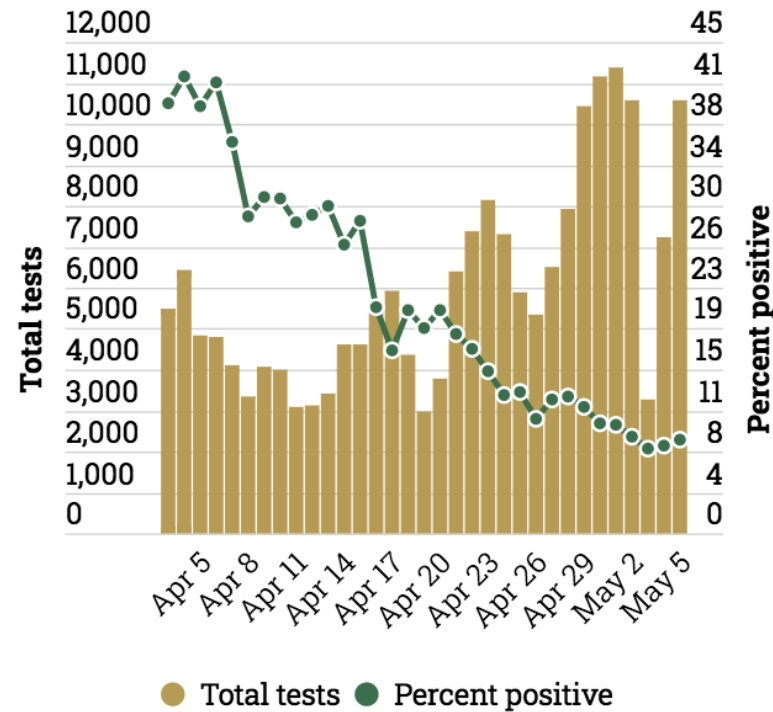
Michigan has done more tests lately with fewer positive results, a good sign as it tries to get a handle on the spread of the coronavirus.



\* Note: Data has lagged two days behind current day

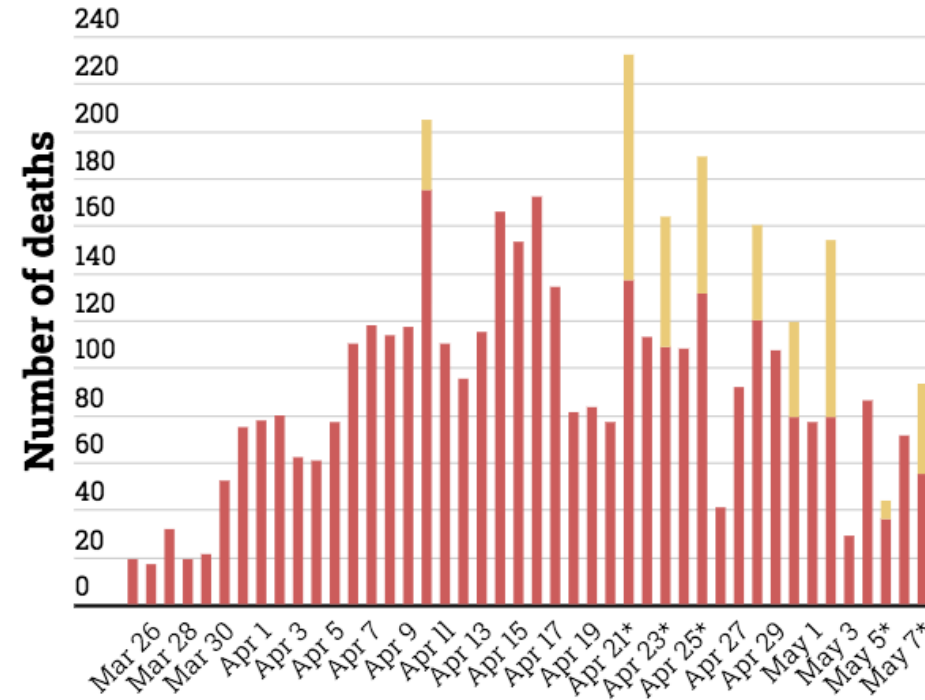
# Positive tests fall

Experts say one benchmark to reopen the state will be when positive virus tests fall below 12 percent. Since the peak of daily new cases, that rate has fallen as the number of tests has risen.



# Daily deaths

Reported deaths by day since March 25



● Deaths ● Added deaths

\*Days on which the state has added deaths based on review of earlier death records.

# What's happening at the local level



Counties are standing up local task forces



Addressing gaps in testing and doing contact tracing



Addressing disparities/inequities



# Bottom Line



Things are moving in the right direction



Still too early to tell, cautiously optimistic



Best strategy is to continue to practice good public health (i.e., protocols, testing, contact tracing)



Michigan Coronavirus Task  
Force on Racial Disparities  
&  
Flint Task Force on COVID-  
19 Racial Inequities

**Debra Furr-Holden, PhD**

Associate Dean for Public Health Integration

Director & C.S. Mott Endowed Professor of  
Public Health

Michigan State University College of Human  
Medicine, Division of Public Health

**Email comments/ideas/questions:**

**Holdenc3@msu.edu**