

MICHIGAN STATE UNIVERSITY
SPARTANS WILL.

Michigan State University's Energy Transition Plan

A strategic plan to guide MSU's energy future

Ann Erhardt

Director of Sustainability
Michigan State University
erhardt7@msu.edu





MICHIGAN STATE UNIVERSITY
SPARTANS WILL.

OUR ENERGY CHALLENGES



CAPACITY



COST



ENVIRONMENT



HEALTH



RELIABILITY

MSU'S ENERGY TRANSITION PLAN

GOAL 1

Improve the physical
environment

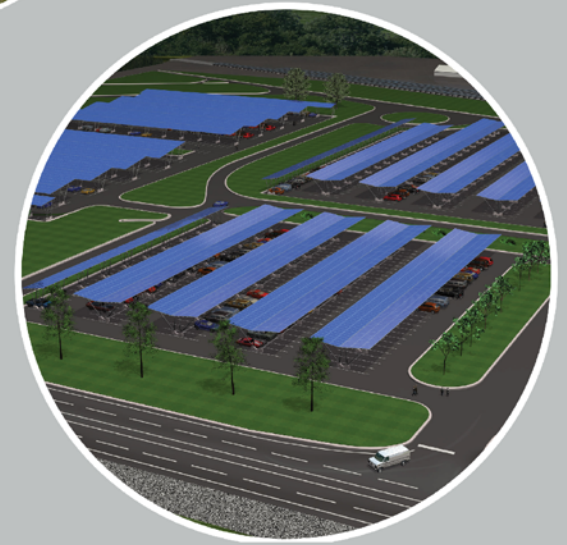
GOAL 2

Invest in sustainable
energy research and
development

GOAL 3

Become an
educational leader in
sustainable energy

FORWARD PROGRESS



1993

MSU's T.B. Simon Power Plant adds a fourth boiler capable of burning coal, natural gas and biomass.

1999

An MSU Sustainability Committee is established (precursor to Office of Campus Sustainability).

2003

MSU's Solar Demonstration Project was installed at the MSU Pavilion.

2007

The first biomass test at the T.B. Simon Power Plant; (cornstarch was used as a test material).

2007

Retro-commissioning program established to upgrade the efficiency of energy use in campus buildings.

2010

MSU installs a geothermal field to heat the Life Sciences building addition.

2011

MSU joins the Better Buildings Challenge.

2012

MSU's Board of Trustees adopts a university Energy Transition Plan.

2013

An anaerobic digester is constructed to supply power for south campus buildings.

2015

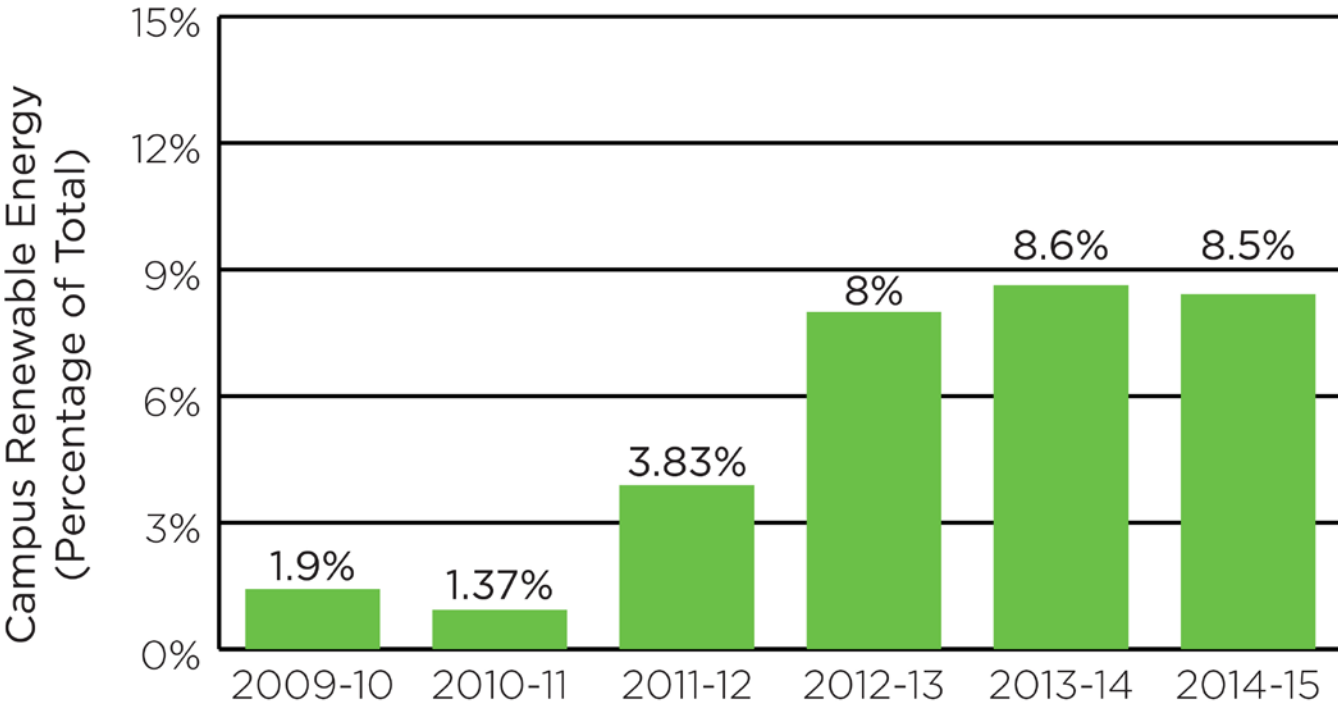
MSU's Board of Trustees approved the planning to create five solar carport locations on campus.

2016

MSU ends coal burning in the T.B. Simon Power Plant.

MICHIGAN STATE UNIVERSITY
SPARTANS WILL.

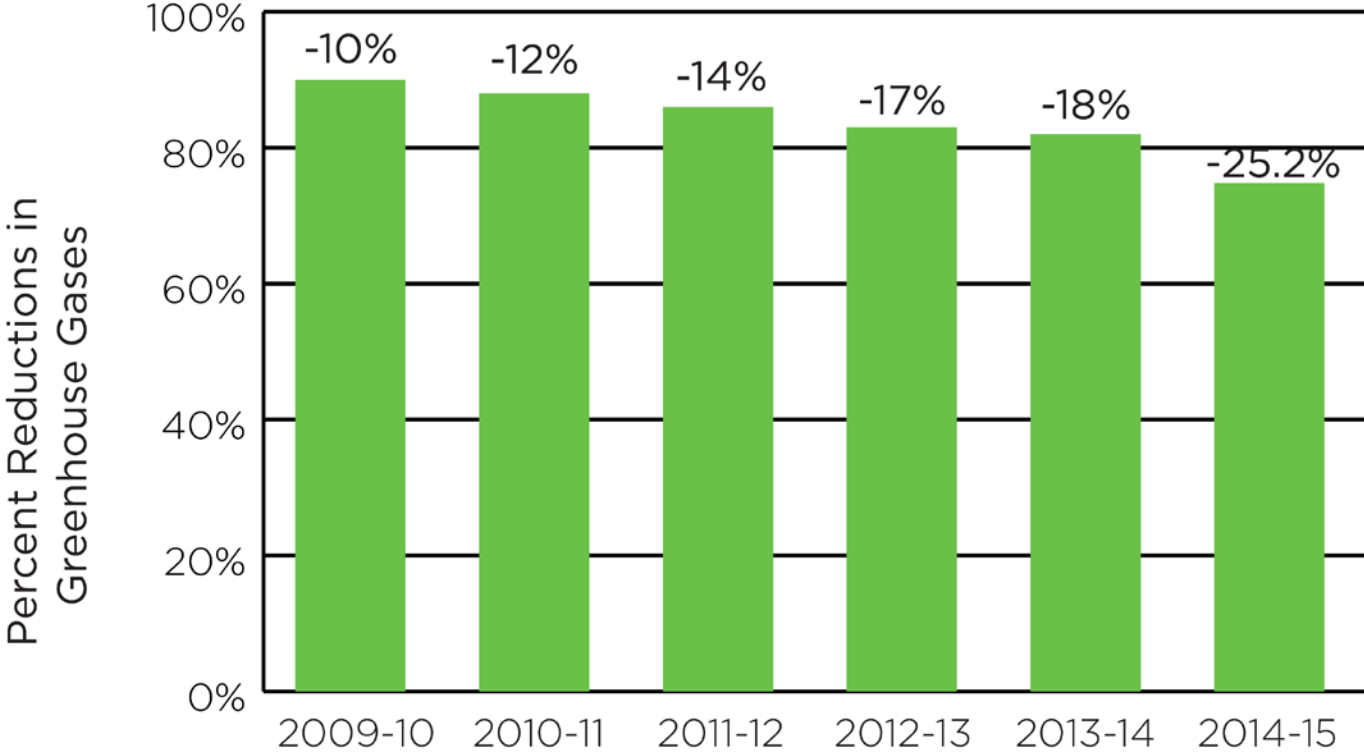
RENEWABLE ENERGY PROFILE



Calculated Renewable Energy Portfolio by Fiscal Year
(From baseline fiscal year 2009-10)

MICHIGAN STATE UNIVERSITY
SPARTANS WILL.

REDUCTION: GREENHOUSE GAS EMISSIONS



Calculated Greenhouse Gas Reduction by Fiscal Year
(From baseline fiscal year 2009-10)

LESSONS LEARNED

WHAT'S NEXT

MICHIGAN STATE UNIVERSITY
SPARTANS WILL.

Questions?

Ann Erhardt

erhardt7@msu.edu